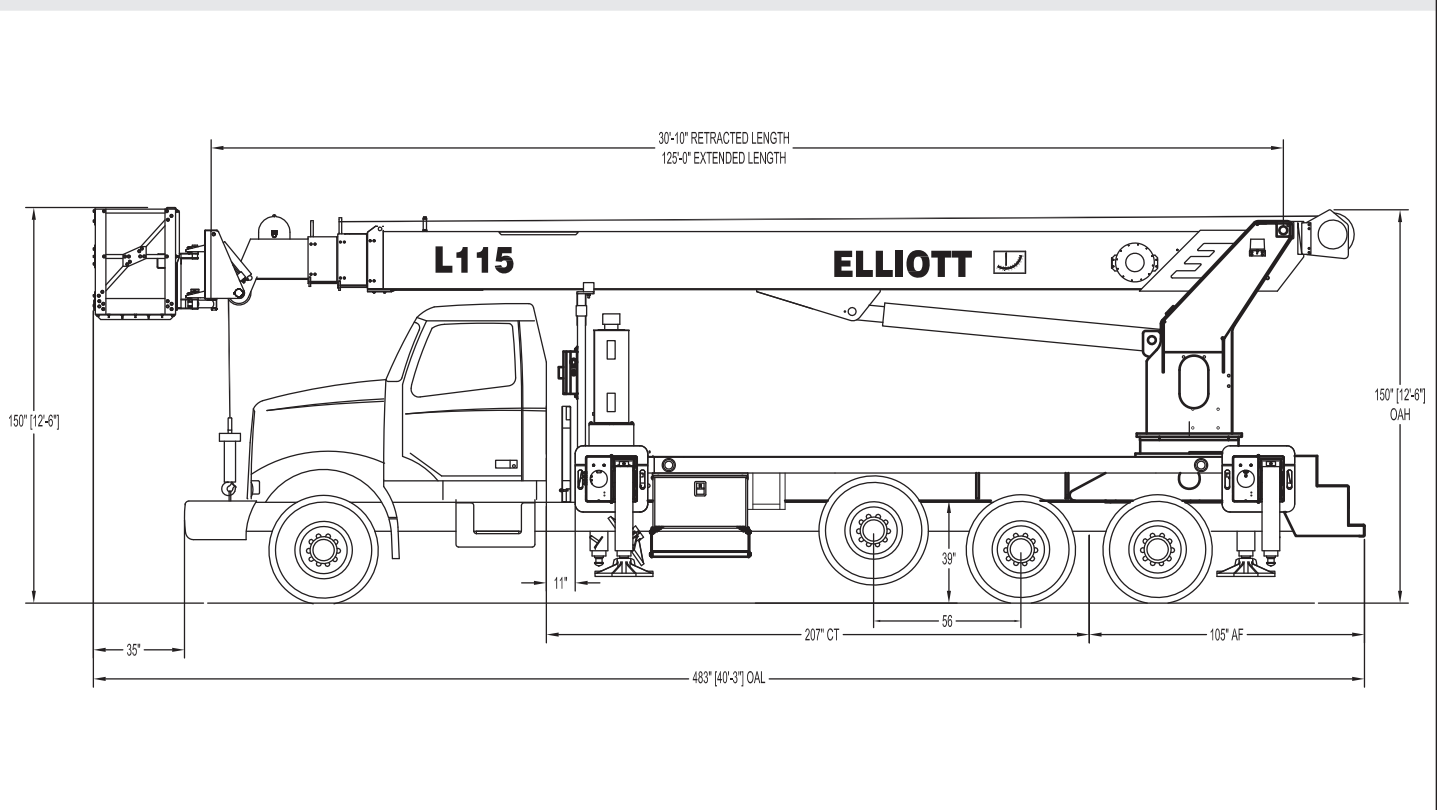




L115 SIDE VIEW DIAGRAM



- | | | | |
|--|--------------------|---|----------------------|
| • Working Height | 115'/35 m | • Powered Boom Sections | 4 |
| • Working Side Reach | 80'/24,4 m | • Overall Height | 12'6"/3,8 m |
| • Platform Capacity | 600 lbs/272 kg | • Unit Weight (Bare) | 30,400 lb/13 789 kg |
| • Platform Size | 30x54"/76x137 cm | • Outrigger Spread Main | 20'/6,1 m |
| • Platform Type | End-Hung | • Outrigger Spread Auxiliary | 20'/6,1 m |
| • Lifting Capacity (Main Winch) | 14,000 lbs/6350 kg | • Front Gross Axle Weight Rating | 20,000 lbs/9072 kg |
| • Jib Winch | N/A | • Rear Gross Axle Weight Rating | 40,000 lbs/18 144 kg |

TECHNICAL SPECIFICATIONS

Maximum Platform Height: 110' ground to platform floor.

Working Range: 115' max. height and 80' max. side reach.

Work Platform: 30"x54" end-hung work platform with 40" high rails. Equipped with two safety lanyard attachment loops and two safety harnesses and 72" lanyards. Platform capacity 600 lbs.

Platform Leveling System: Hydraulic self-contained system consisting of twin platform cylinders interacting with electro-proportional leveling control system and pump motor tank assembly mounted on boom tip. Includes heavy duty deep cycle battery supply and remote charging system for automatic leveling operation.

Platform Controls: Fully proportional wireless remote controller with boom control functions. Platform leveling and rotation controls located within the platform.

Lower Controls: Rotating turret standup operator control station on curbside of crane. Includes four single axis levers to control main boom functions.

Outrigger Controls: Outriggers shall be controlled by ground operated outrigger controls located on the street side and curb side of the unit, directly below the bed.

Outriggers: Front and rear out and down outriggers with 20' spread.

Frame: One piece, all welded, box-type fabrication with integral outrigger mounts.

Turret: Reverse offset turret is one-piece weldment mounted on subframe. Turret rotates on large diameter ball bearing.

Rotation: Continuous turret rotation with no stops. Hydraulic motor drives turret through planetary gear box with automatic brake.

Elliott Equipment Company reserves the right to change the specification of any unit at any time without prior notice. This brochure is only a statement of general specifications on the date of this publication. For more detailed info on specific Elliott trucks go to www.elliottequip.com

Boom: 4-plate steel design. Assembly includes heavy-duty cylinder fittings, pivot pins, and replaceable wear pads.

Boom Extension: One double-acting, two stage hydraulic cylinder extends the boom sections proportionally by means of cables.

Lift: One double-acting cylinder provides smooth and stable boom elevation. Holding valve prevent boom from falling in event of hose failure.

Cylinders: All cylinders use microhoned cylinder tubing, chrome shafts, top grade packing and protective rod wipers. Cylinder-mounted holding valves provided on all load-holding cylinders.

Hoses: All high pressure hoses are wire braid reinforced with a minimum safety factor of 4 to 1.

Oil Tank Capacity: 143 gallon mounted on top of front outriggers.

Hydraulic System: Operating pressure is 3,000 PSI. System is parallel closed center type and is equipped with liquid-filled pressure gauge. Oil is supplied to upper cylinders through hydraulic union in center of turret. Cable reel to provide 12 volt charging circuit to platform hydraulic control system.

Pump: Piston type, direct mount to truck PTO.

PTO: Heavy-duty, high-speed. Switch engaged from cab.

Cab Equipment: PTO cable or switch with indicator lights installed in truck cab. Master power switch on dashboard. U/L approved 5:BC dry chemical fire extinguisher installed in truck cab.

Operators Manual & Video: Two CDs and one printed copy of operation, maintenance, safety and parts manual provided with each unit. Operational and safety video provided at delivery.

Installation: Unit installed on truck, painted, system and tank filled with oil, tested, inspected, and ready to operate.

Standard Paint: Paint boom and turret red, outriggers red, and bed and boxes black. Top of steel bed painted with black nonskid surface.

Bumper: Bureau of Motor Carrier Safety rear bumper.

Weight: Approximately 30,000 lbs. with 16' steel-floor bed less truck.

Truck Chassis Required: Approx. 192" C.T. RBM 3,300,000 in-lb. per rail, 20,000 lb. front axle and 60,000 lb. GVWR required. Trucks must have increased cooling, heavy-duty front and rear springs, 12V electrical system with high capacity alternator, cab clearance stop/tail/backup lights, and I.D. lamps. Extended front frame rails. Recommended GVWR is minimum for HiReach with flatbed only. Contact factory when additional equipment is to be added.

Options:

14,000 lb Capacity Boom Winch.

Automatic Safety Rotation Lockout.

Winch Drum Tensioner.

Hydraulic Oil Cooler with Fan.

LED Lighting System.

Hydraulic Tool Circuit on Bed.

Boom Mounted Hose Reel.

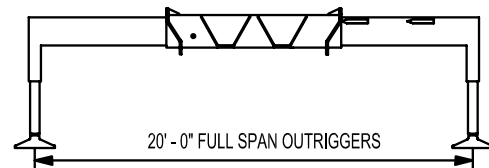
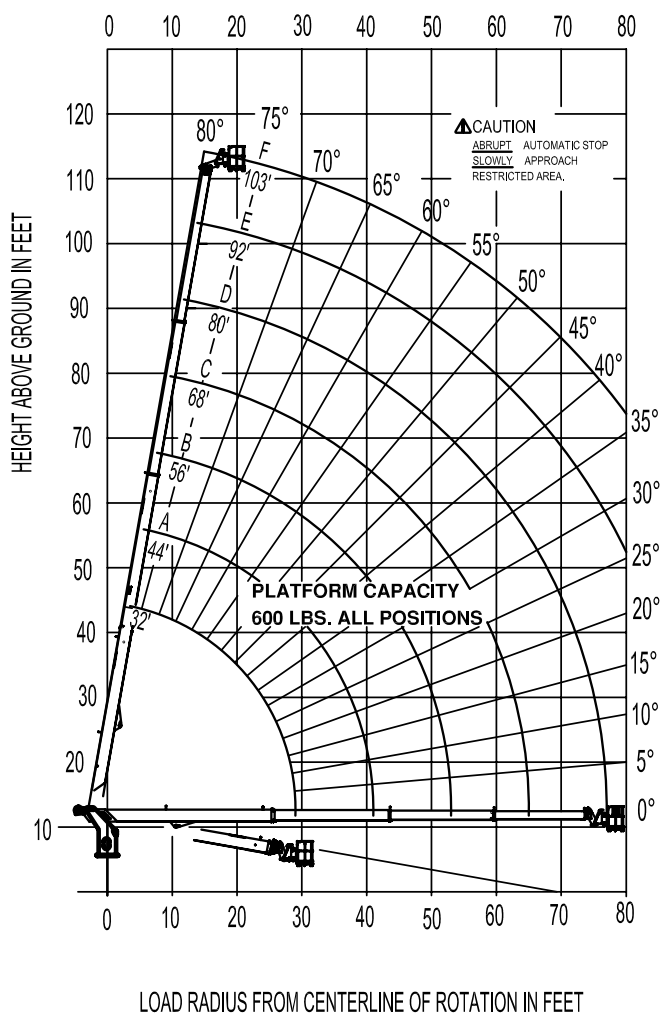
Much More....

MAXIMUM WORKING RANGE



MODEL L115 103-ft BOOM

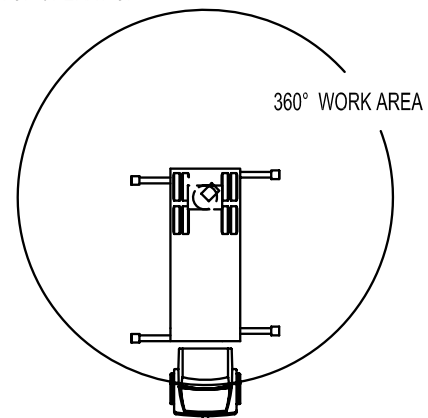
RANGE DIAGRAM WITH FULL SPAN OUTRIGGERS



NOTE:

1. Personnel handling is allowed only with full span outriggers.
2. Boom load ratings are based on loaded boom radius. Loaded boom angles are given as reference only.
3. When handling personnel, radius is measured to the front rail of the platform. Reference loaded boom angles must be increased for platform offset.

AREA OF OPERATION:



1179760 02/16/12

MAXIMUM WINCH LIFTING CAPABILITIES



MODEL L115

103-ft BOOM

360° FULL CHART

MAIN BOOM LOAD RATINGS WITH FULLY EXTENDED OUTRIGGERS (LMI MODE 0003)

MAIN BOOM LOAD RATINGS

LOAD RATINGS IN lbs WITH OUTRIGGERS AND STABILIZERS EXTENDED

LOAD RADIUS (FT)	BOOM ANGLE (deg °)	32-ft	BOOM ANGLE (deg °)	A 44-ft	BOOM ANGLE (deg °)	B 56-ft	BOOM ANGLE (deg °)	C 68-ft	BOOM ANGLE (deg °)	D 80-ft	BOOM ANGLE (deg °)	E 92-ft	BOOM ANGLE (deg °)	F 103-ft
6	78.5	18,000												
8	74.6	18,000												
10	70.8	18,000	77.1	18,000	76.6	18,000								
12	66.4	18,000	74.3	18,000	74.5	17,000								
14	62.1	16,300	71.4	16,500	72.3	14,800	79.5	12,000						
16	57.8	14,000	68.4	14,400	70.2	13,500	77.7	11,500						
18	53.1	12,000	65.4	12,900	68.0	12,800	75.8	11,000						
20	47.9	10,000	62.3	9,600	65.8	11,100	73.9	10,200	77.1	8,000				
25	32.8	7,000	54.0	7,000	60.0	8,200	69.0	7,700	73.4	6,600	77.0	6,250	79.2	4,800
30			44.6	6,100	53.9	6,400	64.2	5,800	69.4	5,200	73.7	5,200	76.3	4,500
35			33.3	4,700	47.3	5,000	59.1	4,700	65.2	4,300	70.3	4,400	73.3	3,900
40			15.3	3,650	39.8	3,800	53.7	3,800	60.8	3,600	66.6	4,100	70.1	3,400
45					31.0	3,000	47.8	3,000	56.4	2,800	62.8	3,300	66.7	3,100
50					18.8	2,400	41.3	2,450	51.6	2,300	58.9	2,700	63.2	2,700
55							33.8	2,000	46.4	1,900	54.8	2,350	59.7	2,350
60							24.4	1,600	40.7	1,600	50.4	2,000	56.0	2,000
65									34.1	1,200	45.7	1,600	52.1	1,650
70									26.3	900	40.5	1,300	48.1	1,350
75									14.8	780	34.8	1,000	43.9	1,100
80											28.0	780	39.2	780
	0	5,000	0	3,400	0	2,200	0	1,400	0	780				

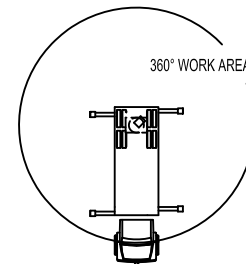
ELLIOTT EQUIPMENT CO. SUPPLIED LOADLINE EQUIPMENT DEDUCTIONS:
 DOWNHAUL WEIGHT180 lbs
 ONE SHEAVE BLOCK.....270 lbs

ADD 200 LBS. IF EZR PLATFORM IS NOT ATTACHED.

NOTICE

- DO NOT DEADHEAD LINE BLOCK AGAINST BOOM TIP WHEN EXTENDING BOOM
- KEEP AT LEAST 5 WRAPS OF LOADLINE ON THE WINCH DRUM AT ALL TIMES
- USE ONLY 9/16" DIAMETER WIRE ROPE, AS SPECIFIED BELOW, WITH THE PROPER BREAKING STRENGTHS LISTED
- ANTI-TWO-BLOCK SYSTEM MUST BE IN GOOD OPERATING CONDITION BEFORE OPERATING CRANE. SEE OPERATION & SAFETY MANUAL

AREA OF OPERATION:



1-PART LINE	2-PART LINE	
MAX PULL: 9,060 lbs	18,000 lbs	9/16" - SPIN RESISTANT (5:1 S.F.) 45,300lbs. BREAKING STRENGTH

OWNER MEETS ASME B30.2 REQUIREMENTS AT TIME OF MANUFACTURE.

DO NOT PUNCH OVER ANY LABELS 11/02/01 12/02/11

CHASSIS DATA

	L115
Wheelbase (WB)	258" / 655 cm
Cab to Tandem (CT)	192" / 488 cm
Cab to End of Frame (EOF)	286" / 726 cm
Frame Section Modulus	27.5 in3 / 120,000 psi
Front Axle Gross Weight Rating	20,000 lb / 9072 kg
Rear Axle Gross Weight Rating	40,000 lb / 18 144 kg
Extended Front Frame	Required to Reduce Front Overhang

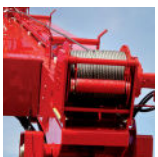
Chassis data is minimum general requirements-not for engineering.
Actual dimensions and truck data will depend on truck selection and axle configuration.

OPTIONS



Ergonomic Ride-Around Seated Controls

Interference protected radio remotes let you get closer to your work and have full control over your machine.



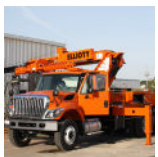
Boom-Mounted Winch

Take advantage of the 14,000 lb capacity 2 speed hydraulic winch with 1/2" cable and a load indication system.



Outrigger Pad Holders

Outrigger pad holders safely store your pads for travel and leave plenty of room for tool boxes.



Custom Paint

Choose from a wide list of high quality paint applications including Elliott's standard white or red paint, metallic paints, or multiple colors.



Extended Truck Cab for More Seating

Configure your machine with an extended cab chassis for increased seating and more productivity out in the field.



Toolbox Configurations

Let us work with you to install a series of steel toolboxes above and below the bed to store tools and supplies.



Bed Accessories

Mount a wide variety of accessories including welders, power washers, and generators on the bed.



Custom Rear Bumpers

Elliott's custom fabrication shop offers a wide range of specialized rear bumpers with integrated steps, toolboxes and much more.