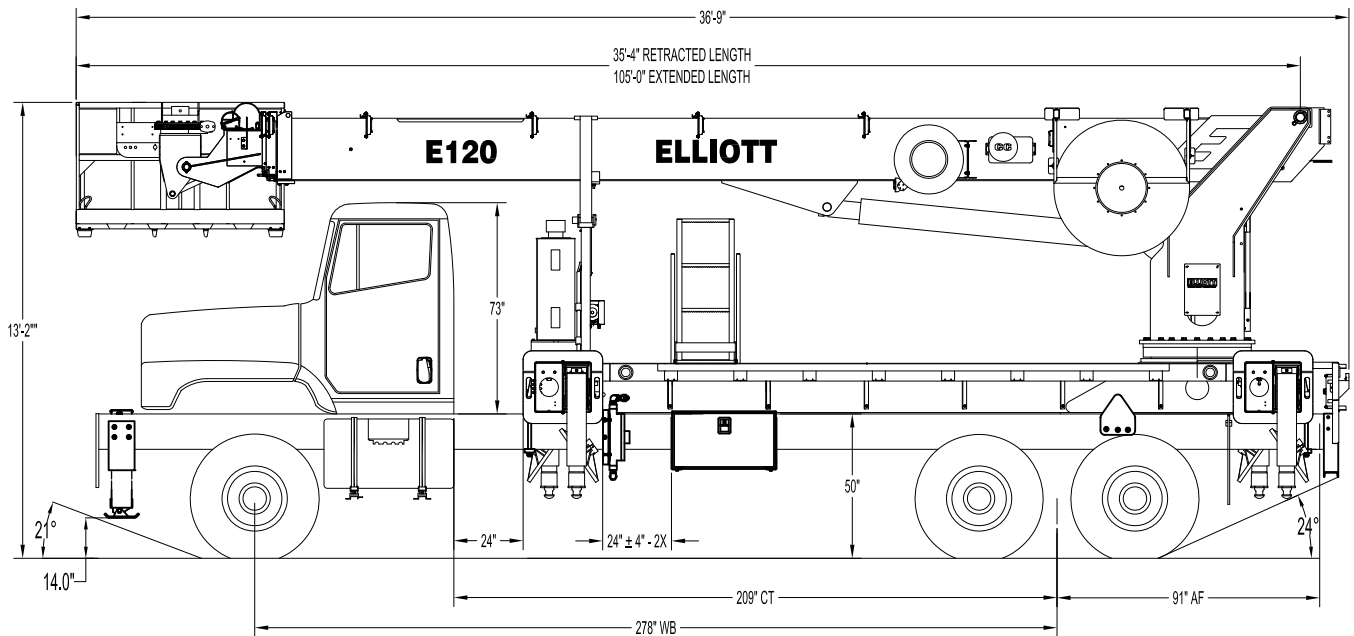




### E120 SIDE VIEW DIAGRAM



- |                               |                  |   |                      |
|-------------------------------|------------------|---|----------------------|
| • <b>Working Height</b>       | 120'/36,6 m      | • <b>Powered Boom Sections</b>          | 4                    |
| • <b>Working Side Reach</b>   | 80'/24,4 m       | • <b>Overall Height</b>                 | 13'2"/4,1 m          |
| • <b>Platform Capacity</b>    | 600 lbs/272 kg   | • <b>Unit Weight (Bare)</b>             | 28,500 lbs/12 927 kg |
| • <b>Platform Size</b>        | 34x72"/86x183 cm | • <b>Outrigger Spread Main</b>          | 20'/6,1 m            |
| • <b>Platform Type</b>        | End Hung         | • <b>Outrigger Spread Auxiliary</b>     | 20'/6,1 m            |
| • <b>Jib Winch</b>            | 1,500 lbs/680 kg | • <b>Front Gross Axle Weight Rating</b> | 20,000 lbs/9072 kg   |
| • <b>Certification (ANSI)</b> | ANSI A92.2       | • <b>Rear Gross Axle Weight Rating</b>  | 40,000 lbs/18 144 kg |

## TECHNICAL SPECIFICATIONS

**Minimum Platform Height:** 115' ground to platform floor.

**Working Range:** 120' max. height and 80' max. side reach.

**Work Platform:** 34x72" End Hung work platform with 40" high rails and gate with latch. Equipped with two safety lanyard attachment loops and two safety harnesses. Platform capacity 600 lbs.

**Platform Leveling System:** Hydraulic system consisting of a single platform cylinder interacting with an electro-proportional level sensing system. Remote releveling controls provided in platform and at ground controls to give precise releveling capability.

**Platform Controls:** Three individual proportional controllers meter pressure-compensated hydraulic valves. Boom ground controls are mounted on curbside of turret. Remote controls for boom operations from platform operate from a wireless radio remote control box. Hi/Lo range, start/stop and engine speed toggle controls are also located on the radio remote controls.

**Lower Controls:** Mounted on curbside of turret.

**Outrigger Controls:** Parallel open-center stack valve for lever-operated control of right and left outriggers. The outrigger valves are mounted at the rear, under each corner of the bed with roadside valve controlling roadside outriggers and curbside valve controlling curbside outriggers.

**Outriggers:** Out-and-Down outriggers with 20 ft. spread. Ball socket aluminum removable pads 22" in diameter with stowage on outrigger legs. Front stabilizer controlled by switch at front stabilizer bumper.

**Frame:** One piece, all welded, box-type fabrication with integral outrigger mounts. Bolt-on torque frame distributes load to front of truck.

**Turret:** One-piece weldment with reverse offset design. Turret rotates on large diameter ball bearing connected to subframe with 36 bolts.

**Rotation:** Continuous turret rotation with no stops. Hydraulic motor drives turret through self-locking gear box with pressure released brake.

**Boom:** 4-section plated boom featuring fully proportional extension. Includes hydraulic hose reel and electric hose reel for platform operation.

**Boom Extension:** Double acting, two-stage hydraulic extension cylinder with holding valves, acting on a cable system, extends 2nd, 3rd and 4th boom sections.

**Lift:** One double-acting long stroke cylinder provides smooth and stable boom elevation. Holding valve prevent boom from falling in event of hose failure.

**Cylinders:** All cylinders use microhoned cylinder tubing, chrome shafts, top grade packing and protective rod wipers. Cylinder-mounted holding valves provided on all load-holding cylinders.

**Hoses:** All high pressure hose is wire braid reinforced with a minimum safety factor of 4 to 1.

**Oil Tank Capacity:** 143 gallon mounted behind chassis cab on front outrigger housing.

**Hydraulic System:** Operating pressure approximately 3,500 PSI. System is a closed center type and is equipped with liquid-filled pressure gauge. Hydraulic reservoir equipped with 10 micron return line filter and shut off valve.

**Pump:** Piston type, direct mount to truck PTO.

**PTO:** Heavy-duty, high-speed. Engaged from cab.

**Cab Equipment:** PTO with indicator lights installed in truck cab. Engine speed control and start/stop installed

with control switches in platform remote control box and also located at lower controls. U/L approved 5:BC dry chemical fire extinguisher installed in truck cab.

**Operators Manual & Video:** Two copies of operation, maintenance, safety and parts manual provided with each unit. Operational and safety video provided at delivery.

**Installation:** Unit installed on customer's truck, painted, system and tank filled with oil, tested, inspected, certified and ready to operate.

**Standard Paint:** Paint Hi-Reach white, outriggers red, and bed and boxes black. Top of bed painted with black nonskid surface.

**Weight:** Approximately 28,500 lbs. with 16' steel-floor bed less truck.

**Truck Chassis Required:** Approx. 204" C.T. RBM 3,000,000 in-lb. per rail, 20,000 lb. front axle and 60,000 lb. GVWR required. Trucks must have increased cooling, heavy-duty front and rear springs, 12V electrical system with high capacity alternator, cab clearance stop/tail/backup lights, and I.D. lamps. Additional equipment to consider: front tow hook, pintle hook, mud and snow tires for off highway use. Recommended GVWR is minimum for E120 with flatbed only. Contact factory when additional equipment is to be added.

**Additional Options:**

Rotating Open Seated Controls.  
Crane Cab with Air Conditioning.  
1,500 lb Jib Winch in Platform.  
500KV Insulated Jib & Basket  
Much More...

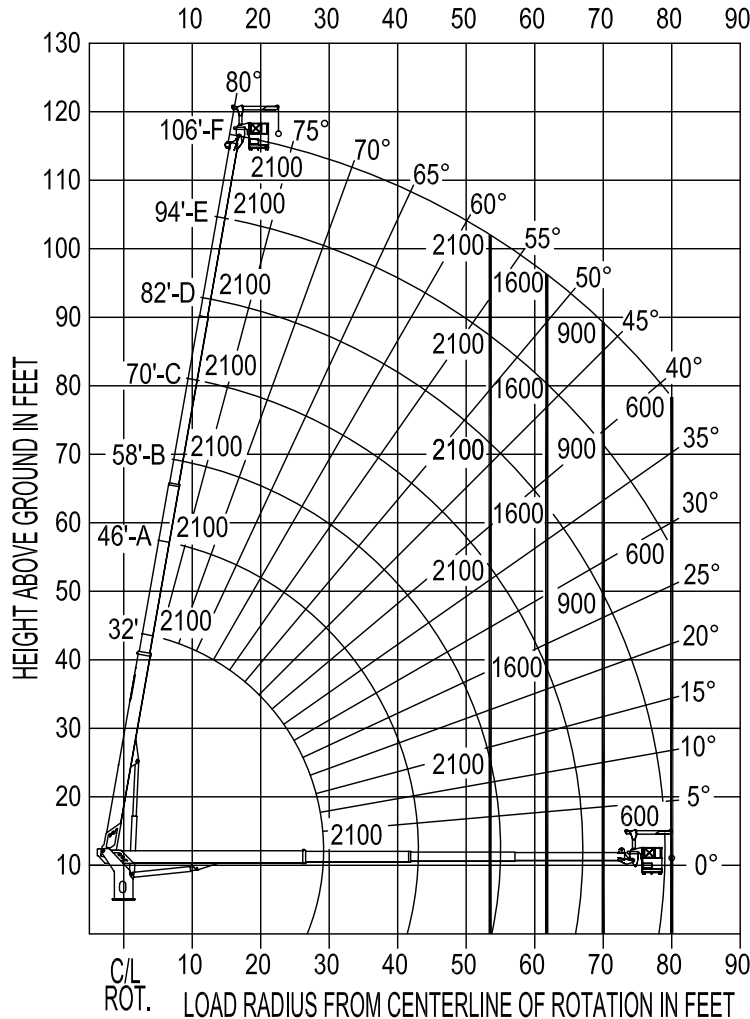
Elliott Equipment Company reserves the right to change the specification of any unit at any time without prior notice. This brochure is only a statement of general specifications on the date of this publication. For more detailed info on specific Elliott trucks go to [www.elliottequip.com](http://www.elliottequip.com)

LOAD AND RANGE CHART - 1,500 LB (680 KG) JIB

# MAXIMUM WORKING LOADS PLATFORM JIB OPERATION MODEL E120

JIB WINCH LINE LOAD (POUNDS) WITH PLATFORM ATTACHED JIB

USE OUTRIGGERS AT ALL TIMES AVOID JERKING LOAD



JIB 1500 LBS. MAX. PERSONNEL 600 LBS. MAX.



**TRUCK CHASSIS SPECIFICATIONS**

	<b>E120</b>
Wheelbase (WB)	268" / 681 cm
Cab to Tandem (CT)	204" / 518 cm
Cab to End of Frame (EOF)	272" / 691 cm
Frame Section Modulus	30.0 in3 / 110,000 psi
Front Axle Gross Weight Rating	20,000 lb / 9072 kg
Rear Axle Gross Weight Rating	40,000 lb / 18 144 kg
Extended Front Frame	Required for Front Stabilizer

Chassis data is minimum general requirements-not for engineering.  
Actual dimensions and truck data will depend on truck selection and axle configuration.

**OPTIONS**



**Radio Remote Control**

Interference protected wireless radio remotes let you get closer to your work and have full control over your machine.



**Material Handling Jib**

Equip your E120 platform with a material handling jib to lift or position up to 1,500 pounds of equipment from within the platform.



**Deep-Penetration Outriggers**

Elliott's two-stage outriggers provide extreme ground penetration for even the most difficult offroad environments. Set up in more places with Elliott.



**Open Seated Control Station**

Choose Elliott's open seated control console for maximum comfort on the job site. Featuring an adjustable weather-proof seat, joystick controls, and LMI display.



**500KV Insulated Jib for Live Line Work**

Work with Elliott's engineering team to equip a 500KV EHV insulated jib and man basket. The 'EHV' package includes the swing out insulated jib and basket.



**110V Line to Platform**

Add a 110V or 220V electrical cable to the work platform to permit the use of tools without requiring an auxiliary power source in the platform.



**6x6 Chassis Mounting Configurations**

Elliott's engineering department will work with you to install on a wide range of chassis including 6x6 chassis requiring custom long-stroke outriggers.



**Climate Specific Solutions**

From extreme cold-weather hydraulic systems, to desert climate hydraulic oil coolers, Elliott has a solution for your business and jobsite needs.